



4 in 1 Hobbyist Golf Club Assembly Workstation

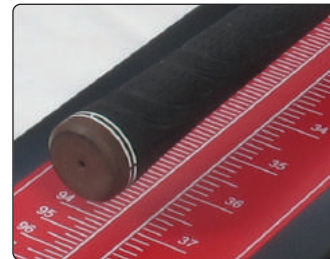
Four of the most commonly used tools in golf club assembly, all in one!
The Hobbyist Golf Club Assembly Workstation offers a shaft trimming guide, a lie & loft gauge with offset measuring capability, a club length ruler and gripping jig all in a convenient and compact tool. This is a functional tool and a great buy for both the enthusiast and the hobbyist alike!

Key Features:

- Bench mount compact foldable combination tool.
- Measures the lie & loft angle and hosel offset on all clubs.
- Measures true club length as well as conforming club length
- Raw shaft length butt and tip trimming scale
- Clip on, adjustable gripping vise with fast toggle clamp
- Length scale measures up to 48" in 1/16" increment



Shaft lock secures club in place to enable accurate measurements to be made.



▲ Measures club playing length as well as length conformance to the R&A and USGA rules



▲ Clubhead soling plate provides precise positioning for measuring lie and loft angle as well as face progression on woods, irons and putters



Optional

◀ The workstation is installed on the edge of bench or table. The folding pane is latched horizontal when measuring clubs and shafts.

Gripping vise clips onto base of ruler when folded to provide an overhang for gripping clubs

▲ A solvent catch pan is hung onto the edge of the ruler when gripping. Solvent catch pan sold separately. Item 110711