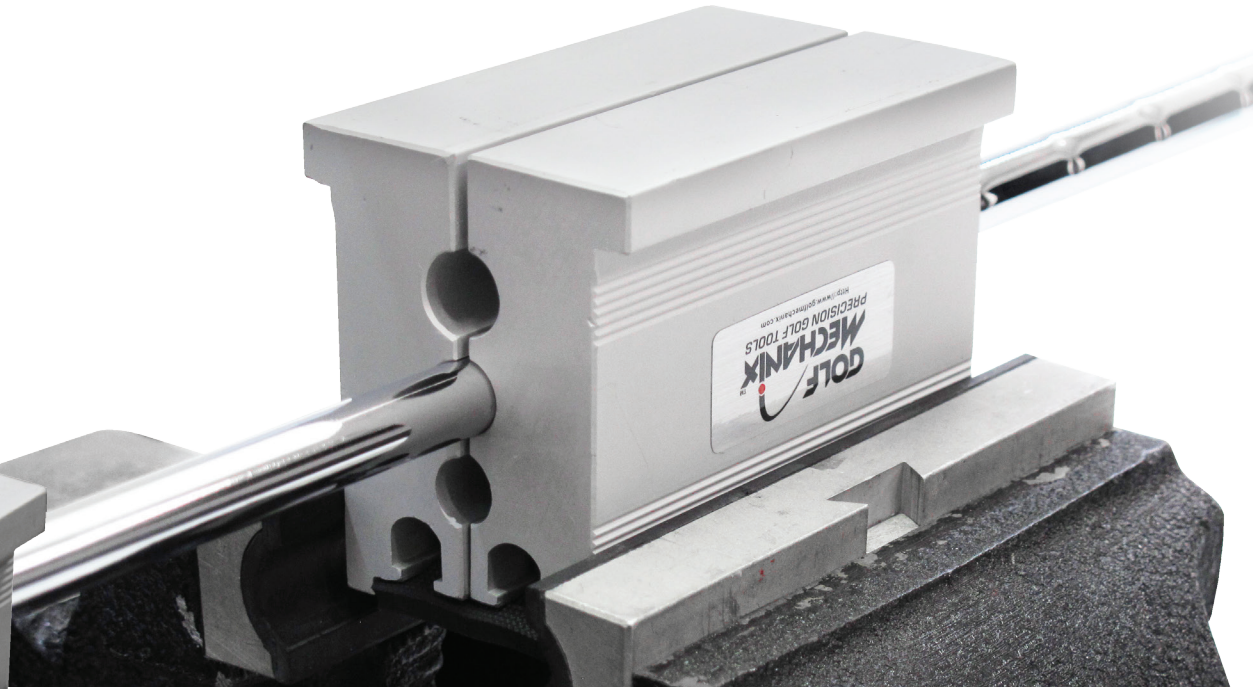
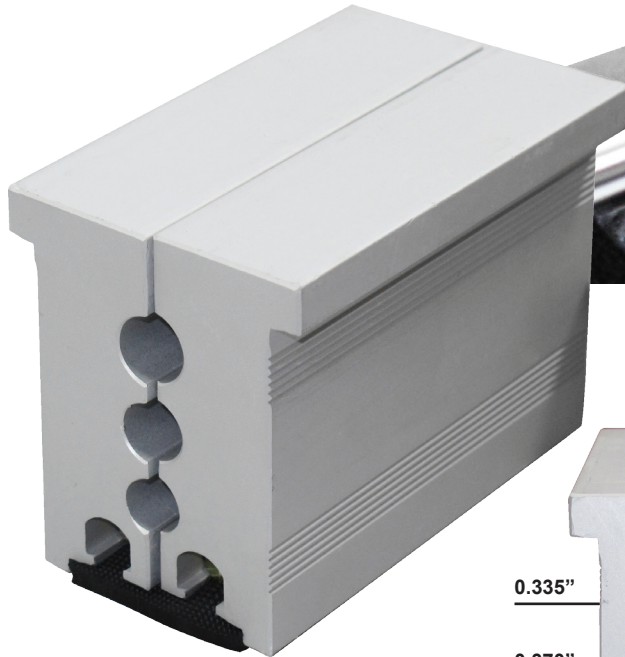




170610 Pro Shaft Clamp

The Pro Shaft Clamp is made of a solid aluminium extrusion. It grasps a full 3 inches of the shaft tip for a secure hold that will not let go. The perfect shaft tip vice for cutting and pulling heads with a crow bar! The hinged and flanged design is very practical and not as fiddly as a split clamp.

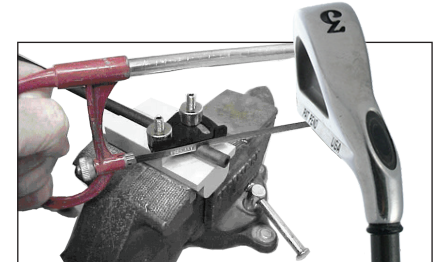


OPTION

120020 Shaft cutting fixture

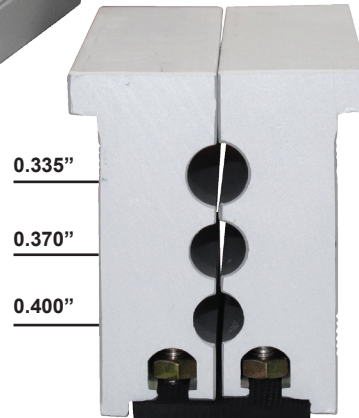
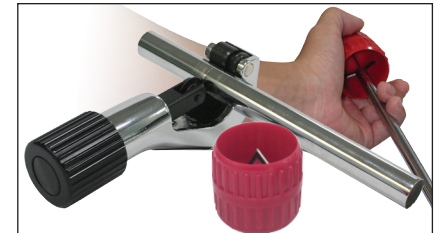
Based on the carpenter's miter box, this device secures the shaft tip and guides the cutting blade to a preset angle.

This tool is a must for re-shafting classic bore-through utility clubs and irons. The nested V shape prevents the shaft from rotating under the blade. Miter must be secured in a vise.



120025 Hand Held Shaft Cutter Kit

Handy, manual, heavy duty cutter for tip and butt trimming steel shafts, and metal shaft extenders, including aluminum, to length. Unlike similar cutters, this particular design features broader guiding rollers and a stiffer stem, to prevent it from spiraling away, allowing for a cleaner and more accurate cut.



0.335"

0.370"

0.400"

Key Features:

- Tip trimming
- Shaft extraction
- Tip coring*
- Tip Prep-ping
- Ferrule tapping