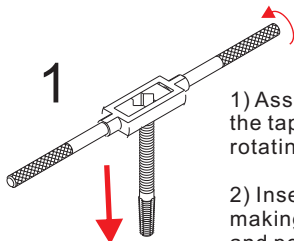
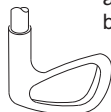


GOLF MECHANIX™ #190100

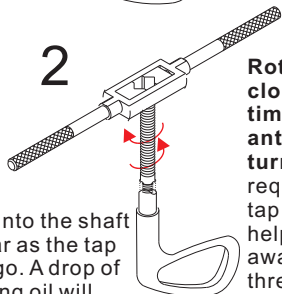
Broken Shaft Extractor



1) Assemble tap handle over the tap shank and tighten by rotating the handle bar.

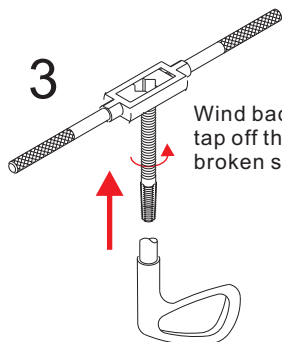


2) Insert tap inside shaft making sure that it is centered and perpendicular to the broken shaft.

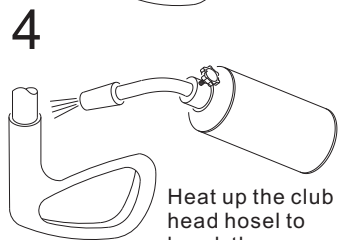


Rotate handle clockwise 1/2 turn at a time. Rotate handle anti clockwise half turn. Repeat as required. Rotating the tap counter clockwise helps break the chip away to prevent the tap thread from clogging.

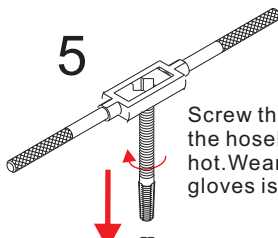
Tap into the shaft as far as the tap will go. A drop of cutting oil will help .



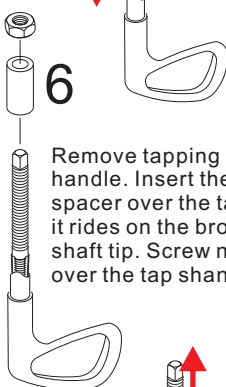
Wind back the tap off the broken shaft tip.



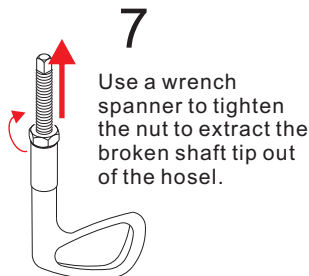
Heat up the club head hosel to break the epoxy bond.



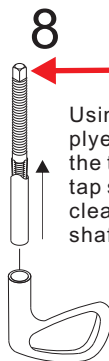
Screw the tap back into the hosel while hot. Wearing protective gloves is recommended



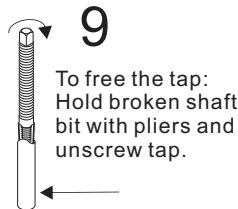
Remove tapping handle. Insert the spacer over the tap so it rides on the broken shaft tip. Screw nut over the tap shank



Use a wrench spanner to tighten the nut to extract the broken shaft tip out of the hosel.



Using a pair of pliers to secure the tap shank; pull tap straight up to clear the broken shaft bit.



To free the tap: Hold broken shaft bit with pliers and unscrew tap.

WARNING! The shaft extractor tap is made of super hard High Speed Steel. The tap may shatter if used improperly. Do not force tap when cutting threads. **Always apply 1/2 turn clockwise followed by half turn counter clockwise. Keep tap straight. Do not thread at an angle**

Wear protective eye goggles and Protective gloves